



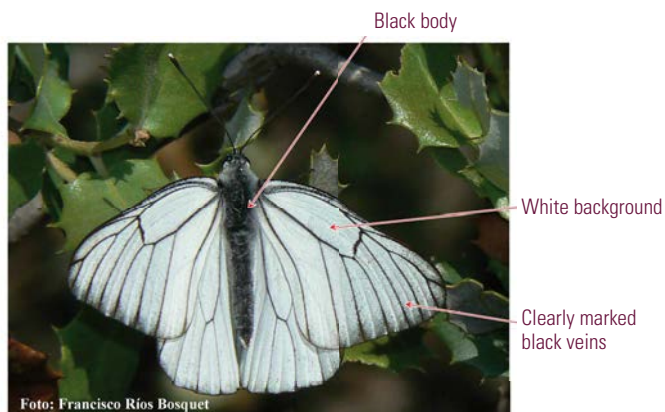
Black-veined White

Aporia crataegi (Linnaeus, 1758)

DESCRIPTION

Wingspan: From 5 to 7.7 cm. **Open wings:** white with clearly marked veins. **Closed wings:** Depending on the butterfly, their closed wings are white or light yellow, with black scales scattered over them, and clearly marked black veins.

KEY FOR VISUAL IDENTIFICATION





SIMILAR SPECIES

Due to their colours, veins and the lack of shapes on the wings, they cannot be confused with any other species.

BIOLOGY & HABITAT

This species takes one generation a year to fly, above all, in May and June.

It lives in well-preserved forests with plenty of scrubs at an altitude of more than 300 m, where its caterpillars foodplants, bushes such as Hawthorn (*Crataegus monogyna*), Blackthorn (*Prunus spinosa*) and Iberian Pear (*Pyrus bourgaeana*), can be found.

Jan	Feb	Mar	Apr	May	Jun	Jul	Aug	Sep	Oct	Nov	Dec
-----	-----	-----	-----	-----	-----	-----	-----	-----	-----	-----	-----

DISTRIBUTION

The species is not common in Málaga, and its populations are limited to specific places. As for the GMP, it can be found along the Serranía de Ronda stages, at the Arco Calizo Central and some specific places, such as holm oak forests and hawthorns in the north of the province, where it is rather rare. There are possibilities that some populations can be spotted along the routes which go through the Tejeda and Almjara Mountains and the Genal Valley.

